

COLLES FRACTURE REDUCTION & CASTING TECHNIQUE TRAINER

#1530

SET-UP INSTRUCTIONS

Thank you for purchasing the
Sawbones Colles fracture reduction
& casting technique trainer.

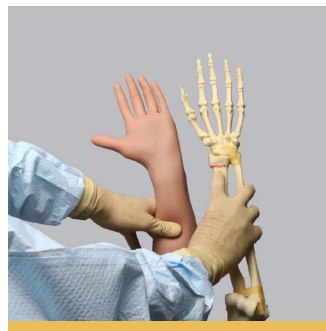
 **SAWBONES®**

This multi-discipline training model
allows users to incorporate manual reduction
with real time fluoroscopic visualization. With a little care and
maintenance your new model should provide you with many years of
service.

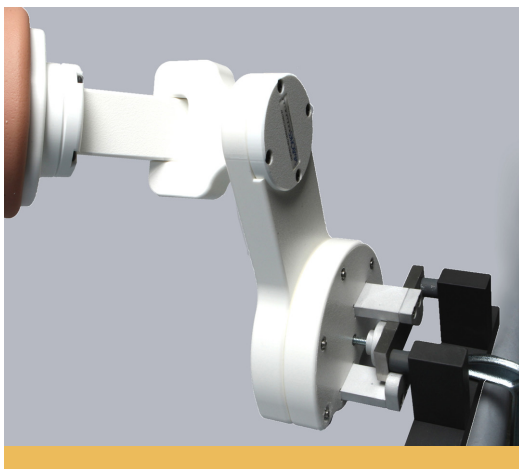
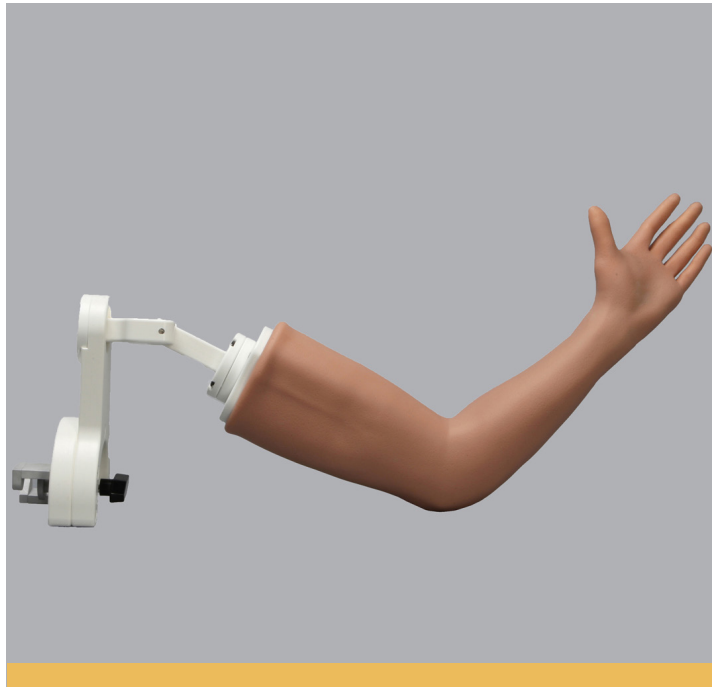
COMPONENTS & ANATOMY

**#1530 Colles fracture reduction &
casting technique trainer include:**

- Soft tissue arm model with bones
- Adapter plate with setup instructions
- Instructional flash drive



Traditional roll on casting, performed by
manually reducing the fracture, can be done with
or without finger traps. Casting materials can be
removed using standard cast removal techniques.



The trainer includes a multi-position
universal bed rail clamp allowing the
user to train in the most common
patient positions.



SET-UP ALTERNATIVES

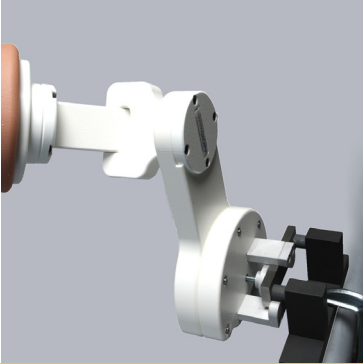
Secure the arm by bed rail adaptor or table clamp

The Colles fracture reduction training arm comes with two ways to secure the arm, either to a bedrail or to a table mounted clamp.

The model arrives with the bedrail adaptor attached to the arm (See set-up movie on the flash drive that comes with the arm).



SET-UP INSTRUCTIONS
#1530



Bed rail adaptor

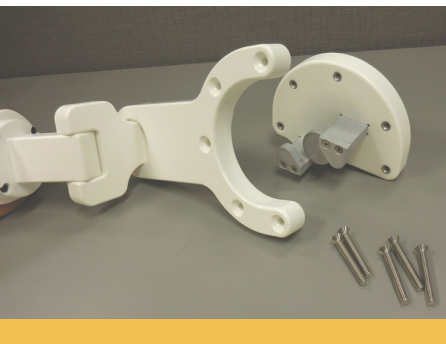


Table mounted clamp
#1605 ordered separately

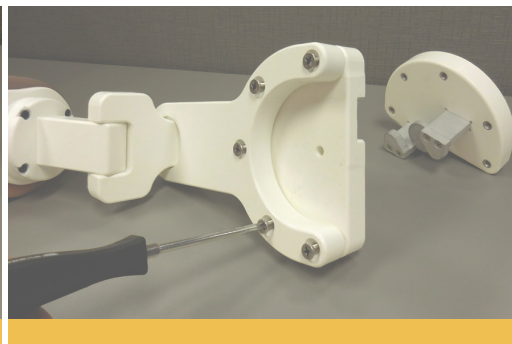
Several types of table mounted clamps can be used however, please note that the simulator has a similar to real-life weight and will require a clamp and table construction strong enough to support the weight. The table mounted clamp shown in the image to the left is Sawbones' #1605 clamp assembly and is ideal for use with this model.

In the event that a table clamp or vice is to be used, follow the below instructions to attach the adapter plate.

SET-UP INSTRUCTIONS - TABLE CLAMP



Step 1: Remove existing bedrail clamp by removing the five screws.



Step 2: Attach the table clamp adapter using the same five screws.



Step 3: Attach #1605 series table clamp or compatible substitute to table with C-clamp or similar.

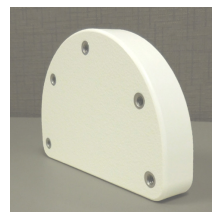


Table clamp
adaptor plate



NOTE: There are metal threaded inserts in the adapter plate. They should be oriented as shown above.

CARE & MAINTENANCE

Your model can be wiped down with any mild cleaner. Use only the dry erase marker on the model. Standard ink can not be removed. Store in a dry, dark place out of direct contact with sunlight.

