

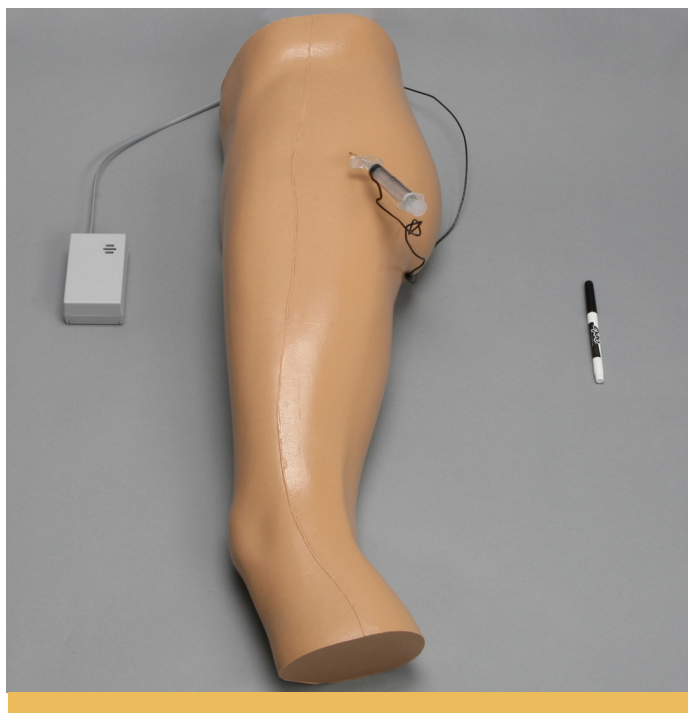
# HIP CONDUCTIVE INJECTION MODEL

**#1516-2**

## SET-UP INSTRUCTIONS

Thank you for purchasing the Sawbones hip conductive injection model.

This injection trainer can be used to teach or demonstrate needle placement for aspiration and joint injection. With the correct needle insertion, an audible tone will sound indicating proper placement of the chosen area. Palpation of the major anatomical landmarks may also be performed. Additional conductive structures may be added upon request. With a little care and maintenance your new model should provide you with many years of service.



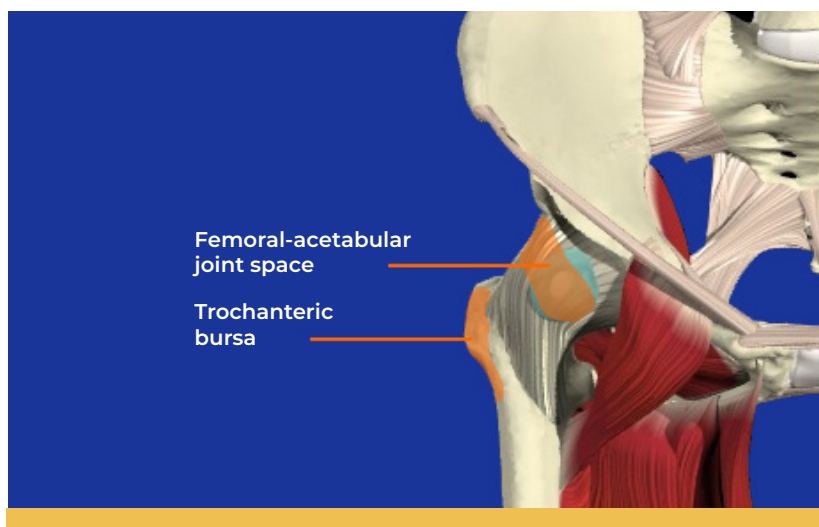
## COMPONENTS

### #1516-2 Hip Conductive Injection Model include:

- Soft tissue injection hip
- Audio feedback box with leads
- Needle assembly with lead
- Dry erase marker



## OPERATION AND ANATOMICAL FEATURES



### This model contains these conductive anatomical points:

- Femoral-acetabular joint space
- Trochanteric bursa

Locate the appropriate spot for injection (i.e. joint space bursa).

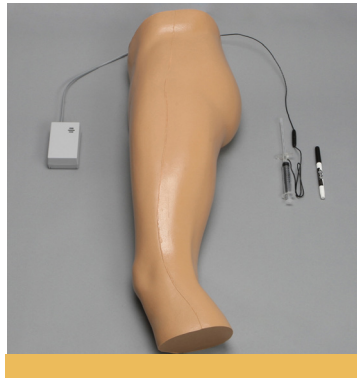
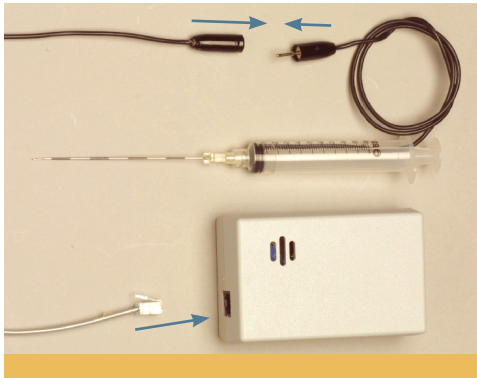
Insert needle into location. The audio feedback box will emit a tone when the tip of the needle has made contact with the correct area.

Use the dry erase marker to identify injection targets.

© Primal Pictures Ltd, 2000



## SET-UP INSTRUCTIONS



## SET-UP INSTRUCTIONS #1516-2

**Step 1:** Lay out all parts and inspect for shipping damage.

**Step 2:** Insert wire lead from syringe into the black wire.

**Step 3:** Insert male phone connector into audio feedback box.

## REPLACEMENT PARTS



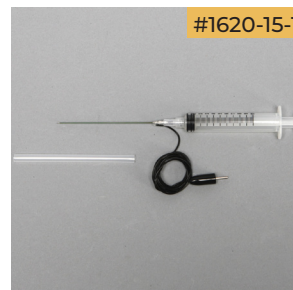
Conductive Needle Set,  
3.5" Needle Length



Conductive audio  
feedback emitter



Needle Assembly,  
3.5" Needle length



Conductive Needle Assembly,  
3.5" Needle Length

Note: Replacement parts available at  
[www.sawbones.com](http://www.sawbones.com)

## CARE & MAINTENANCE

### IMPORTANT

**To maintain audio feedback, do not remove plunger assembly or needle from the syringe. This model is NOT intended for injection of fluids.**

Your model can be wiped down with any mild cleaner. Use only the dry erase marker on the model. Standard ink can not be removed. Store in a dry, dark place out of direct contact with sunlight.

