

WRIST ARTHROSCOPY MODEL

#1415

SET-UP INSTRUCTIONS

Thank you for purchasing the
Sawbones wrist arthroscopy model.



This arthroscopy model may be used for diagnostic and visualization skills including triangulation and pathology identification. The model has color-coded anatomical structures for easy identification. Loose body retrieval may also be performed. With a little care and maintenance your new model should provide you with many years of service.



COMPONENTS & ANATOMY

#1415 Wrist Arthroscopy Model include:

- Soft tissue hand with vice block
- Color-coded wrist insert
- Bone clamp
- C-clamp



Anatomical structure:

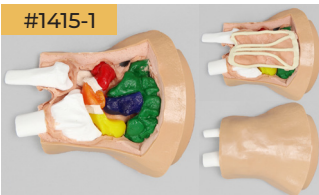
- Scaphoid (yellow)
- Lunate (orange)
- Triquetral (red)
- Trapezium (green)
- Trapezoid (green)
- Hamate (green)
- Capitate (blue)
- Radius (white)
- TFC (off-white)
- Vincula (off-white)



Note: It is possible to install small loose bodies for retrieval.

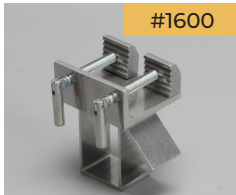
REPLACEMENT PARTS

#1415-1



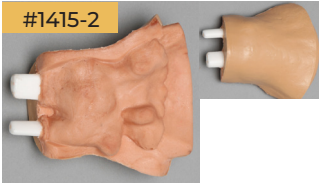
Color-coded wrist insert, standard

#1600



Bone clamp

#1415-2



Wrist insert, pathology

#1601



C-clamp

Note: Replacement parts available at
www.sawbones.com



SET-UP INSTRUCTIONS



Step 1: Use the bone and C-clamp combination to attach the model to the table as shown.

Step 2: Securely attach the plastic vice block to the bone clamp.

INSERT REMOVAL & REPLACEMENT



Step 1: With the model still attached to the clamp, bend fingers toward palm.

Step 2: Remove distal end of insert first.

Step 3: Then carefully pull proximal end out.

Step 4: Reverse procedure to install new insert.

CARE & MAINTENANCE

Your model can be wiped down with any mild cleaner. Use only the dry erase marker on the model. Standard ink can not be removed. Store in a dry, dark place out of direct contact with sunlight.